



PRICE LIST

NOVEMBER 1, 2006

Prices and information contained herein
are subject to change without notice

PRIDE Enterprises

Sewn Products Customer Service

P.O. Box 215

Lowell, FL 32663

352-732-1303 Ext 224, 230, 237

FAX 352-732-1309

FEID # 59-216-7018-004

Rev. #82013-0700

SEWN PRODUCTS

<u>TABLE OF CONTENTS</u>	<u>PAGE</u>
Ordering Information	ii
Men’s Inmate Uniforms	1
Work Uniforms	2
Women’s Inmate Uniforms	3
County Jail Uniforms	5
Men’s Undergarments	8
Women’s Undergarments	9
Pajamas	9
Work Clothes	10
Sweatshirts	11
Belts	11
Gloves	12
Socks	12
Footwear Accessories	12
Shoes & Boots	12
Culinary Items	14
Healthcare Items	15
Towels, Shower Curtains, & Bags	17
Mattresses	18
Pillows	19
Pillow Cases, Blankets, & Sheets	20
Isolation Products	20

ORDERING INFORMATION

To order by Fax or mail, simply send us your purchase order.

Orders may be **Faxed to (352) 732-1309** or Mailed to:

**PRIDE
Sewn Products Business Unit
P.O. Box 215
Lowell, FL 32663**

To speak to a Customer Service Representative, please call our Sewn Products office at:

(352) 732-1303; Ext. 224, 230 or 237:

Silk screening and Custom Embroidery are available upon request, for an additional charge.

Custom requests or requests for items not found in this price list are welcomed.

For volume pricing quotes please contact our Customer Service Representatives.

Delivery Information

Our industry requires from the receipt of your order at our facility, 30 days on stock items and 45 days on non stock items for manufacturing and delivery.

Freight charges will be prepaid and added to all orders outside of the state of Florida. Freight charges in state for all items except mattresses, mattress covers, special shoes, and pillows are FOB destination. Freight for mattresses, mattress covers, and pillows are shipped pre-paid and added to all orders. If a freight quote is necessary, please contact our Customer Service Representatives. Proof of Deliveries are available upon request, within 30 days of receipt of order, for an additional charge.

All orders are subject to fuel surcharge.

Warranty Information


All Sewn Products manufactured by PRIDE are covered under PRIDE's Sewn Products warranty. PRIDE warrants to the original purchaser that each product will be free from defects in workmanship or material default. All claims will be reviewed on an individual basis.

If you find it necessary to file a claim, please contact our Customer Service Representatives and have your proof of purchase and/or order number available for reference.

Bid Requests

**Bid Administration Dept.
727-556-3383
727-570-3370 FAX**

Prices and specifications are subject to change without notice.

<u>Item Number</u>	<u>Description</u>	<u>Size</u>	<u>Unit of Measure</u>	<u>List Price</u>	
<u>MEN'S INMATE UNIFORMS</u>					
	2301-01	Pants, twill, button fly, colors: postman blue with white stripe or white with blue stripe sewn into the side of the pants, available in even sizes only	26-42"	ea	\$7.70
		44-56"	ea	8.30	
		58-68"	ea	8.90	
	2301-06	Pants, twill, button fly, colors; postman blue, brown, gray, green, navy, orange, red or white, available in even sizes only, no stripe.	26-42"	ea	8.30
			44-56"	ea	8.90
			58-68"	ea	9.50
	2110-15	Shirt, poplin, V neck pullover, short sleeve, colors: postman blue, light green, navy or white	sm -xlg	ea	4.45
			2xlg -3xlg	ea	4.60
			4xlg	ea	4.70
			5xlg	ea	4.80
6xlg			ea	4.90	
7xlg			ea	5.00	
8xlg			ea	5.15	
9xlg			ea	5.65	
10xlg			ea	6.15	
11xlg			ea	6.65	
12xlg	ea	7.15			
2107-01	Shirt, poplin, button front, convertible collar, short sleeve, colors: postman blue, light green, navy, white or tan.	sm - xlg	ea	5.60	
		2xlg -3xlg	ea	5.85	
		4xlg	ea	6.00	
		5xlg	ea	6.15	
		6xlg	ea	6.30	
		7xlg	ea	6.45	
		8xlg	ea	6.60	
		9xlg	ea	7.10	
		10xlg	ea	7.60	
		11xlg	ea	8.10	
12xlg	ea	8.65			
2107-02	Shirt, poplin, button front, convertible collar, long sleeve, colors: postman blue, light green, navy, white or tan.	sm - xlg	ea	6.10	
		2xlg - 3xlg	ea	6.60	
		4xlg	ea	6.75	
		5xlg	ea	7.00	
		6xlg	ea	7.15	
		7xlg	ea	7.30	
		8xlg	ea	7.50	
		9xlg	ea	8.00	
		10xlg	ea	8.55	
		11xlg	ea	9.05	
12xlg	ea	9.55			
2110-16	Shirt, twill, V neck pullover, long sleeve, colors: postman blue, or white	sm - 2x	ea	5.20	
		3x - 5x	ea	5.55	
		6x -7x	ea	5.80	
		8x	ea	6.15	
		9x	ea	6.65	
		10x	ea	7.15	
		11x	ea	7.65	
		12x	ea	8.15	

<u>Item Number</u>	<u>Description</u>	<u>Size</u>	<u>Unit of Measure</u>	<u>List Price</u>
--------------------	--------------------	-------------	------------------------	-------------------

MEN'S INMATE UNIFORMS (continued)

2101-09	Pants, Sumter, twill, colors: postman blue w/white stripe, navy w/white stripe or white w/navy stripe. Stripe sewn onto the side of the pants, available in even sizes	26-42"	ea	\$8.80
		44-56"	ea	9.40

2107-09	Shirt, Sumter, twill, colors: postman blue w/white epaulets, navy w/white epaulets or white w/navy epaulet	sm - xlg	ea	6.35
		2xlg-3xlg	ea	6.85
		4xlg	ea	7.10
		5xlg	ea	7.35
		6xlg	ea	7.60



2734-06	Jacket, twill outer shell, flannel lined, color: postman blue, brown, gray, green, khaki, navy, orange, red and white	sm - xlg	ea	16.05
		2xlg-3xlg	ea	16.70
		4xlg	ea	17.35
		5xlg	ea	18.00
		6xlg	ea	18.70
		7xlg	ea	19.35
		8xlg	ea	20.00
		9xlg	ea	20.85
		10xlg	ea	21.70

2734-06	Jacket, twill outer shell, flannel lined, color: black/white, green/white or red/white 3" wide stripes	sm - xlg	ea	17.05
		2xlg-3xlg	ea	17.70
		4xlg	ea	18.37
		5xlg	ea	19.05
		6xlg	ea	19.70
		7xlg	ea	20.35
		8xlg	ea	21.00
		9xlg	ea	21.85
		10xlg	ea	22.75

2734-09	Jacket, 100% cotton herringbone navy outer shell, flannel lined	sm - xlg	ea	17.05
		2xlg-3xlg	ea	17.70
		4xlg	ea	18.35
		5xlg	ea	19.05
		6xlg	ea	19.70
		7xlg	ea	20.35
		8xlg	ea	21.00
		9xlg	ea	21.85
		10xlg	ea	22.75

2334-03	Cap, twill, cloth "bill": Colors: postman blue Colors: gray, green, khaki, navy, orange, red, yellow or white Striped: black/white, green/white or red/white	universal	ea	1.15
		universal	ea	1.55
		universal	ea	1.95

WORK SHIRTS

2107-15	Work Shirt, Men's, short sleeve, 2 chest pockets, colors: white, postman blue, navy, Lt.green, tan.	sm - xlg	ea	6.85
		2x - 3x	ea	7.90
		4x - 5x	ea	9.45
		6x - 8x	ea	11.35

<u>Item Number</u>	<u>Description</u>	<u>Size</u>	<u>Unit of Measure</u>	<u>List Price</u>
--------------------	--------------------	-------------	------------------------	-------------------

WORK SHIRTS (continued)

2107-16	Work Shirt Men's, long sleeve, 2 chest pockets, colors: white, postman blue, navy, Lt. green, tan	sm - xl	ea	\$7.85
		2x - 3x	ea	9.05
		4x - 5x	ea	10.80
		6x - 8x	ea	13.00
2107-17	Work Shirt Women's, short sleeve, 2 chest pockets, colors: white, postman blue, navy, Lt. green, tan	sm - xl	ea	6.85
		2x - 3x	ea	7.90
		4x - 5x	ea	9.45
		6x - 8x	ea	11.35
2107-18	Work Shirt Women's, long sleeve, 2 chest pockets, colors: white, postman blue, navy, Lt. green, tan	sm - xl	ea	7.85
		2x - 3x	ea	9.05
		4x - 5x	ea	10.80
		6x - 8x	ea	13.00

WORK PANTS

2101-03	Men's Work Pants, Full Cut, color: white, postman blue, navy, khaki, brown, green, gray, or red, Specify inseam.	26 - 42"	ea	10.50
		44 - 50	ea	12.05
		52 - 54	ea	13.90
		56 - 58	ea	16.65
		60 - 68	ea	20.00
2101-04	Women's Work Pants, Full Cut, color: white, postman blue, navy, khaki, brown, green, gray, or red Specify inseam.	0 - 16	ea	10.50
		18 - 24	ea	12.05
		26 - 34	ea	13.90



WOMEN'S INMATE UNIFORMS

2119-01	Dress, poplin, button front, colors: postman blue, navy, light green or white	sm - xlg	ea	8.60
		2xlg-3xlg	ea	9.35
		4xlg	ea	9.70
		5xlg	ea	10.05
		6xlg	ea	10.40
		7xlg	ea	10.85
		8xlg	ea	11.30
2122-09	Maternity dress, poplin, button front, colors: postman blue, light green, navy or white	sm - xlg	ea	9.45
		2xlg-3xlg	ea	10.15
		4xlg	ea	10.55
		5xlg	ea	10.95
		6xlg	ea	11.35
		7xlg	ea	11.85
2101-11	Pants, women's, twill, full-cut, zipper fly, colors: postman blue with white stripe down the side of the pants	6-20	ea	8.55
		22-30	ea	9.00
		32-36	ea	9.50
		38-44	ea	10.10



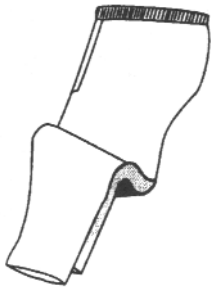
<u>Item Number</u>	<u>Description</u>	<u>Size</u>	<u>Unit of Measure</u>	<u>List Price</u>
<u>WOMEN'S INMATE UNIFORMS (continued)</u>				
2110-17	Shirt, women's, poplin, V neck pullover, short sleeve, colors: postman blue, light green, navy or white	sm - xlg	ea	\$4.45
		2xlg-3xlg	ea	4.60
		4xlg	ea	4.70
		5xlg	ea	4.80
		6xlg	ea	4.90
		7xlg	ea	5.00
		8xlg	ea	5.15
		9xlg	ea	5.65
		10xlg	ea	6.15
		11xlg	ea	6.65
		12xlg	ea	7.15
		2107-05	Shirt, women's, poplin, button front, convertible collar, short sleeve, colors: postman blue, light green, navy, white or tan.	sm - xlg
2xlg-3xlg	ea			5.85
4xlg	ea			6.00
5xlg	ea			6.15
6xlg	ea			6.30
7xlg	ea			6.45
8xlg	ea			6.60
9xlg	ea			7.10
10xlg	ea			7.60
11xlg	ea			8.10
12xlg	ea			8.65
2107-06	Shirt, women's, poplin, button front, convertible collar, long sleeve, colors: postman blue, light green, navy, white or tan.			sm - xlg
		2xlg-3xlg	ea	6.60
		4xlg	ea	6.75
		5xlg	ea	7.00
		6xlg	ea	7.15
		7xlg	ea	7.30
		8xlg	ea	7.50
		9xlg	ea	8.00
		10xlg	ea	8.55
		11xlg	ea	9.05
		12xlg	ea	9.55
		2734-05	Jacket, women's, twill outer shell, flannel lined, colors: postman blue, brown, gray, green, khaki, navy, orange, red or white	sm -xlg
2xlg-3xlg	ea			16.70
4xlg	ea			17.35
5xlg	ea			18.00
6xlg	ea			18.70
7xlg	ea			19.35
8xlg	ea			20.00
8xlg	ea			20.00
2734-05	Jacket, women's, twill outer shell, flannel lined, colors: black/white, green/white or red/white 3" wide stripes	sm - xlg	ea	17.05
		2xlg-3xlg	ea	17.70
		4xlg	ea	18.35
		5xlg	ea	19.05
		6xlg	ea	19.70
		7xlg	ea	20.35
8xlg	ea	21.00		



For volume pricing on Jail Uniforms, please contact our Customer Service Representatives.

<u>Item Number</u>	<u>Description</u>	<u>Size</u>	<u>Unit of Measure</u>	<u>List Price</u>
--------------------	--------------------	-------------	------------------------	-------------------

COUNTY JAIL UNIFORMS



2204-01	Pants, unisex, twill, mock fly, elastic waistband Colors: khaki, navy, orange, postman blue or white	sm - xlg	ea	\$6.10
		2xlg-3xlg	ea	7.05
		4xlg	ea	7.30
		5xlg	ea	7.50
		6xlg	ea	7.75
		7xlg	ea	8.00
		8xlg	ea	8.30
		9xlg	ea	8.75
		10xlg	ea	8.95
		Colors: brown, gray, green, red or yellow	sm - xlg	ea
	2xlg-3xlg		ea	7.30
	4xlg		ea	7.50
	5xlg		ea	7.70
	6xlg		ea	7.95
	7xlg		ea	8.25
	8xlg		ea	8.50
	9xlg		ea	8.95
	10xlg		ea	9.20
Colors: black/white, green/white or red/white 3" wide stripes	sm - xlg		ea	7.35
	2xlg-3xlg	ea	8.45	
	4xlg	ea	8.75	
	5xlg	ea	9.15	
	6xlg	ea	9.55	
	7xlg	ea	9.95	
	8xlg	ea	10.30	
	9xlg	ea	10.90	
	10xlg	ea	11.45	

2204-05	Shorts, twill, mock fly, colors: brown, gray, green, khaki, navy, orange, postman blue, red, white or yellow Specify inseam: 7", 9", 11"	sm - xlg	ea	4.95
		2xlg-3xlg	ea	5.70
		4xlg	ea	5.90
		5xlg	ea	6.10
		6xlg	ea	6.30

2210-01	Shirt, twill, V neck pullover, short sleeve Colors: khaki, navy, orange, postman blue or white	sm - xlg	ea	4.75
		2xlg-3xlg	ea	5.45
		4xlg	ea	5.65
		5xlg	ea	5.80
		6xlg	ea	6.00
		7xlg	ea	6.20
		8xlg	ea	6.35
		9xlg	ea	6.70
		10xlg	ea	6.95



Colors: brown, gray, green, red or yellow	sm - xlg	ea	5.00
	2xlg-3xlg	ea	5.75
	4xlg	ea	5.90
	5xlg	ea	6.10
	6xlg	ea	6.25
	7xlg	ea	6.50
	8xlg	ea	6.65
	9xlg	ea	7.00
	10xlg	ea	7.20

For volume pricing on Jail Uniforms, please contact our Customer Service Representatives.

<u>Item Number</u>	<u>Description</u>	<u>Size</u>	<u>Unit of Measure</u>	<u>List Price</u>
<u>COUNTY JAIL UNIFORMS (continued)</u>				
	Colors: black/white, green/white or red/white 3" wide stripes	sm - xlg	ea	\$5.75
		2xlg-3xlg	ea	6.65
		4xlg	ea	6.80
		5xlg	ea	7.00
		6xlg	ea	7.15
		7xlg	ea	7.35
		8xlg	ea	7.60
		9xlg	ea	7.90
		10xlg	ea	8.15
2210-03	Shirt, women's, twill, V neck pullover, short sleeve Colors: khaki, navy, orange, postman blue or white	sm - xlg	ea	4.95
		2xlg-3xlg	ea	5.70
		4xlg	ea	5.85
		5xlg	ea	6.05
		6xlg	ea	6.20
		7xlg	ea	6.40
		8xlg	ea	6.60
		9xlg	ea	6.95
		10xlg	ea	7.10
	Colors: brown, gray, green, red or yellow	sm - xlg	ea	5.25
		2xlg-3xlg	ea	6.00
		4xlg	ea	6.15
		5xlg	ea	6.30
		6xlg	ea	6.50
		7xlg	ea	6.70
		8xlg	ea	6.90
		9xlg	ea	7.20
		10xlg	ea	7.45
2210-03	Shirt, women's, twill, V neck pullover, short sleeve Colors: black/white, green/white or red/white 3" wide stripes	sm - xlg	ea	6.00
		2xlg-3xlg	ea	6.90
		4xlg	ea	7.05
		5xlg	ea	7.20
		6xlg	ea	7.40
		7xlg	ea	7.55
		8xlg	ea	7.85
		9xlg	ea	8.10
		10xlg	ea	8.40
2134-26	Jump suit, twill, concealed snap front, raglan sleeves back elastic waist , long sleeves: Colors: khaki, navy, orange, postman blue or white	sm -xlg	ea	15.00
		2xlg-3xlg	ea	16.50
		4xlg	ea	17.35
		5xlg	ea	18.20
		6xlg	ea	19.10
		7xlg	ea	19.95
		8xlg	ea	20.80



For volume pricing on Jail Uniforms, please contact our Customer Service Representatives.

<u>Item Number</u>	<u>Description</u>	<u>Size</u>	<u>Unit of Measure</u>	<u>List Price</u>
<u>COUNTY JAIL UNIFORMS (continued)</u>				
	Colors: brown, gray, green, red or yellow	sm - xlg	ea	\$15.55
		2xlg-3xlg	ea	17.00
		4xlg	ea	17.85
		5xlg	ea	18.75
		6xlg	ea	19.60
		7xlg	ea	20.45
		8xlg	ea	21.30
	Striped: black/white, green/white or red/white	xsm -8xlg	ea	Quote
2134-27	Jump suit, twill, concealed snap front, raglan sleeves <u>back elastic waist</u> , short sleeves: Colors: khaki, navy, orange, postman blue or white	sm - xlg	ea	13.75
		2xlg-3xlg	ea	15.10
		4xlg	ea	15.90
		5xlg	ea	16.65
		6xlg	ea	17.40
		7xlg	ea	18.15
		8xlg	ea	18.95
	Colors: brown, gray, green, red or yellow	sm - xlg	ea	14.25
		2xlg-3xlg	ea	15.65
		4xlg	ea	16.40
		5xlg	ea	17.15
		6xlg	ea	17.90
		7xlg	ea	18.70
		8xlg	ea	19.45
	Striped: black/white, green/white or red/white	xsm - 8xlg	ea	Quote
2134-11	Jump suit, twill, concealed snap front, raglan sleeves <u>without elastic waist</u> , long sleeves: Colors: khaki, navy, orange, postman blue or white	sm - xlg	ea	14.45
		2xlg-3xlg	ea	15.90
		4xlg	ea	16.70
		5xlg	ea	17.50
		6xlg	ea	18.30
		7xlg	ea	19.15
		8xlg	ea	19.95
	Colors: brown, gray, green, red or yellow	sm - xlg	ea	14.95
		2xlg-3xlg	ea	16.40
		4xlg	ea	17.20
		5xlg	ea	18.00
		6xlg	ea	18.85
		7xlg	ea	19.65
		8xlg	ea	20.45
	Striped: black/white, green/white or red/white	xsm - 8xlg	ea	Quote



For volume pricing on Jail Uniforms, please contact our Customer Service Representatives.

<u>Item Number</u>	<u>Description</u>	<u>Size</u>	<u>Unit of Measure</u>	<u>List Price</u>
<u>COUNTY JAIL UNIFORMS (continued)</u>				
2134-12	Jump suit, twill, concealed snap front, raglan sleeves <u>without elastic waist</u> , short sleeves: Color: khaki, navy, orange, postman blue or white	sm -xlg 2xlg-3xlg 4xlg 5xlg 6xlg 7xlg 8xlg	ea ea ea ea ea ea ea	\$13.20 14.50 15.30 16.05 16.80 17.55 18.30
	Color: brown, gray, green, red or yellow	sm - xlg 2xlg-3xlg 4xlg 5xlg 6xlg 7xlg 8xlg	ea ea ea ea ea ea ea	13.70 15.02 15.80 16.55 17.30 18.05 19.50
	Striped: black/white, green/white or red/white	xsm-8xlg	ea	Quote

MEN'S UNDERGARMENTS



2228-04	Shorts, jockey, men's, colors: white	sm - xlg 2xlg-3xlg	ea ea	1.80 2.80
---------	--------------------------------------	-----------------------	----------	--------------

2228-03	Shorts, boxers, men's, colors: white	sm - xlg 2xlg-3xlg 4xlg 5xlg 6xlg 7xlg 8xlg 9xlg 10xlg	ea ea ea ea ea ea ea ea ea	1.60 1.70 1.80 1.90 2.00 2.50 3.05 3.55 4.60
---------	--------------------------------------	--	--	--



2128-02	T-Shirt, 50% polyester /50% cotton, medium weight, colors: white	xsm - xlg 2xlg-3xlg 4xlg 6xlg 8xlg 10xlg	ea ea ea ea ea ea	1.65 1.80 2.05 3.00 3.90 4.80
---------	--	---	----------------------------------	--



2128-15	Thermal underwear top, colors: white	sm - xlg 2xlg-3xlg 4xlg 5xlg 6xlg 7xlg 8xlg	ea ea ea ea ea ea ea	3.05 3.30 3.60 3.75 4.10 4.30 4.45
---------	--------------------------------------	---	--	--



2128-17	Thermal underwear bottom, men's, colors: white	sm - xlg 2xlg-3xlg 4xlg 5xlg 6xlg 7xlg 8xlg	ea ea ea ea ea ea ea	3.05 3.30 3.60 3.75 4.10 4.30 4.45
---------	--	---	--	--

<u>Item Number</u>	<u>Description</u>	<u>Size</u>	<u>Unit of Measure</u>	<u>List Price</u>
<u>WOMEN'S UNDERGARMENTS</u>				
2128-18	Thermal underwear bottom, women's, colors: white	sm - xlg	ea	\$3.05
		2xlg-3xlg	ea	3.30
		4xlg	ea	3.60
		5xlg	ea	3.75
		6xlg	ea	4.10
		7xlg	ea	4.30
		8xlg	ea	4.45
2228-09	Panties, 100% cotton, medium weight, colors: white	4-7	ea	0.95
		8-11	ea	1.05
		12-15	ea	1.15
2228-11	Half slip, colors: white	sm -xlg	ea	4.05
		2xlg-3xlg	ea	4.25
		4xlg	ea	4.45
		5xlg	ea	4.65
		6xlg	ea	4.85
		7xlg	ea	5.10
		8xlg	ea	5.30
2228-30	Bras, sports, white Even sizes only	32-38	ea	2.95
		40-52	ea	3.65
<u>PAJAMAS</u>				
2225-09	Pajama bottom, men's, elastic waist, open fly Color: white	sm - xlg	ea	4.35
		2xlg-3xlg	ea	4.50
		4xlg	ea	4.65
		5xlg	ea	4.80
		6xlg	ea	4.95
	Color: blue	sm - xlg	ea	4.90
		2xlg-3xlg	ea	5.05
		4xlg	ea	5.25
		5xlg	ea	5.40
		6xlg	ea	5.60
2225-13	Pajama top, men's Color: white	sm - xlg	ea	4.35
		2xlg-3xlg	ea	4.50
		4xlg	ea	4.65
		5xlg	ea	4.80
		6xlg	ea	4.95
	Color: blue	sm - xlg	ea	4.90
		2xlg-3xlg	ea	5.05
		4xlg	ea	5.25
		5xlg	ea	5.40
		6xlg	ea	5.60
2225-02	Pajama set, women's, elastic waist, knee length pants Color: white	sm - xlg	ea	7.90
		2xlg-3xlg	ea	8.50
		4xlg	ea	8.80
		5xlg	ea	9.05
		6xlg	ea	9.30



<u>Item Number</u>	<u>Description</u>	<u>Size</u>	<u>Unit of Measure</u>	<u>List Price</u>
<u>PAJAMAS (continued)</u>				
	Color: blue	sm - xlg	ea	\$9.00
		2xlg-3xlg	ea	9.65
		4xlg	ea	9.95
		5xlg	ea	10.30
		6xlg	ea	10.60
2225-01	Pajama set, women's, long length pants, elastic waist Color: white	sm - xlg	ea	7.90
		2xlg-3xlg	ea	8.50
		4xlg	ea	8.80
		5xlg	ea	9.05
		6xlg	ea	9.30
	Color: blue	sm - xlg	ea	9.00
		2xlg-3xlg	ea	9.65
		4xlg	ea	9.95
		5xlg	ea	10.30
		6xlg	ea	10.60
2134-13	Duster, button front, short sleeve Color: white	sm -xlg	ea	8.10
		2xlg-3xlg	ea	9.40
		4xlg	ea	10.20
		5xlg	ea	11.35
		6xlg	ea	12.55
		7xlg	ea	13.70
		8xlg	ea	14.85
	Color: blue	sm -xlg	ea	8.95
		2xlg-3xlg	ea	10.20
		4xlg	ea	11.00
		5xlg	ea	12.20
		6xlg	ea	13.35
		7xlg	ea	14.50
		8xlg	ea	15.70
<u>WORK CLOTHES</u>				
2110-12	T-shirt, work, 100% cotton, 1 pocket, full-cut Colors: navy, orange, or light green	sm - xlg	ea	3.30
		2xlg-3xlg	ea	4.05
		4xlg	ea	4.80
	Colors: navy, orange, light green	sm - xlg	ea	3.55
		2xlg-3xlg	ea	4.30
		4xlg	ea	5.10
2110-13	T-shirt, work, 50 / 50, 1 pocket, full-cut Color: white	sm - xlg	ea	3.05
		2xlg-3xlg	ea	3.55
		4xlg	ea	4.05
	Colors: gray, khaki, or light blue	sm - xlg	ea	3.30
		2xlg-3xlg	ea	4.05
		4xlg	ea	4.80
	Colors navy, orange, light green	sm - xlg	ea	3.55
		2xlg-3xlg	ea	4.30
		4xlg	ea	5.05



Other colors are available in both 100% cotton & 50 / 50, please contact our Customer Service Representatives for a quote

<u>Item Number</u>	<u>Description</u>	<u>Size</u>	<u>Unit of Measure</u>	<u>List Price</u>
--------------------	--------------------	-------------	------------------------	-------------------

WORK CLOTHES (continued)

2334-11	Basic coveralls, twill, button front, long sleeve Colors: khaki, navy, orange, postman blue, or white	sm - xlg	ea	\$13.70
		2xlg-3xlg	ea	15.25
		4xlg	ea	16.00
		5xlg	ea	16.75
		6xlg	ea	17.50
		7xlg	ea	18.25
		8xlg	ea	19.05
	Color: brown, gray, green, red, or yellow	sm - xlg	ea	14.20
		2xlg-3xlg	ea	15.75
		4xlg	ea	16.50
		5xlg	ea	17.25
		6xlg	ea	18.00
		7xlg	ea	18.80
		8xlg	ea	19.55
2334-12	Basic coveralls, twill, button front, short sleeve Colors: khaki, navy, orange, postman blue, or white	sm - xlg	ea	12.45
		2xlg-3xlg	ea	13.96
		4xlg	ea	14.45
		5xlg	ea	14.95
		6xlg	ea	15.50
		7xlg	ea	16.00
		8xlg	ea	16.50
	Colors: brown, gray, green, red, or yellow	sm - xlg	ea	12.95
		2xlg-3xlg	ea	14.45
		4xlg	ea	14.95
		5xlg	ea	15.50
		6xlg	ea	16.00
		7xlg	ea	16.50
		8xlg	ea	17.00

SWEATSHIRTS



2710-06	Sweatshirt, poly/cotton blend, medium weight, full cut, colors: light gray	sm - xlg	ea	6.75
		2xlg-3xlg	ea	7.05
		4xlg	ea	7.35
		5xlg	ea	7.65
		6xlg	ea	7.95
		7xlg	ea	8.25
		8xlg	ea	8.60
		9xlg	ea	8.90
		10xlg	ea	9.20
		11xlg	ea	9.50
		12xlg	ea	9.80

BELTS



		<u>Size / Fits Waist</u>		
2435-02	Belt without buckle, colors: black, khaki or navy	(38") 30-36	ea	0.90
		(46") 38-44	ea	1.00
		(54") 46-52	ea	1.10
		(62") 54-60	ea	1.20

<u>Item Number</u>	<u>Description</u>	<u>Size</u>	<u>Unit of Measure</u>	<u>List Price</u>
--------------------	--------------------	-------------	------------------------	-------------------

BELTS (continued)

2435-01	Belt with buckle, colors: black, khaki or navy	(38") 30-36	ea	\$1.40
		(46") 38-44	ea	1.50
		(54") 46-52	ea	1.60
		(62") 54-60	ea	1.70

GLOVES



2435-09	Gloves, work, leather palm	one size	pr	1.35
2435-07	Gloves, work, all leather	one size	pr	5.10
2169-04	Glove pouch, vinyl, black	one size	pr	1.50

SOCKS



2131-01	Socks, cotton tube, 18" , 20 oz. / dz.	one size	pr	0.55
2131-06	Socks, nylon tube, 18" , 17 oz. / dz.	one size	pr	0.55
2131-16	Socks, cushion tube, 18" , 25 oz. / dz.	one size	pr	0.60
2131-11	Socks, cotton tube, 24" , 25 oz. / dz.	one size	pr	0.65

FOOTWEAR ACCESSORIES

2583-06	Sockliners, even sizes only	5-15	dozen	12.00
2093-66	Shoelaces for 8" boots	66"	gross	12.50
2093-48	Shoelaces for 6" boots	48"	gross	12.50
2093-27	Shoelaces for Low Quarter Shoes	27"	gross	10.70

SHOES



2542-16	Shoe, low quarter, work, full-grain leather, black	5 - 12 13 - 15	pr pr	17.50 19.75
2542-38	Shoe, low quarter, work, full-grain leather, brown	5 - 12 13 - 15	pr pr	17.50 19.75
2542-15	Shoe, low quarter, women's, work, full-grain leather, black, regular widths only	6 - 10 11 - 15	pr pr	17.50 19.75
2544-16	Shoe, low quarter, safety toe, full-grain leather, black	5 - 12 13 - 15	pr pr	19.70 21.95
2544-38	Shoe, low quarter, safety toe, full-grain leather, brown	5 - 12 13 - 15	pr pr	19.70 21.95
2544-15	Shoe, low quarter, women's, safety toe, full-grain leather black, regular widths only	6 - 10 11 - 15	pr pr	19.70 21.95

Men's Sizes Available: 5-15 (full sizes); 6-1/2 to 11-1/2 (half sizes)
 Women's Sizes Available: 6-15 (full sizes)

Men's Shoes are available in R=Regular width at standard price
 Men's Shoes are available in N=Narrow, W=Wide and EEE= Extra Wide widths for an additional charge.

<u>Item Number</u>	<u>Description</u>	<u>Size</u>	<u>Unit of Measure</u>	<u>List Price</u>
<u>BOOTS</u>				
* 2541-16	Boot, 6 inch, work, full-grain leather, black	5 - 12 13 - 15	pr pr	\$17.75 20.00
2541-38	Boot, 6 inch, work, full-grain leather, brown	5 - 12 13 - 15	pr pr	17.75 20.00
2541-15	Boot, 6 inch, women's, work, full-grain leather, black regular widths only	6 - 10 11 - 15	pr pr	17.75 20.00
* 2543-16	Boot, 6 inch, work, safety toe, full-grain leather, black	5 - 12 13 - 15	pr pr	19.95 22.20
2543-38	Boot, 6 inch, work, safety toe, full-grain leather, brown	5 - 12 13 - 15	pr pr	19.95 22.20
2543-15	Boot, 6 inch, women's, safety-toe, full-grain leather, black regular widths only	6 - 10 11 - 15	pr pr	19.95 22.20
2867-01	Sandles, slip-on, PVC Colors: Orange, Tan	sm (men's 6-7) med (men's 8-9) lrg (men's 10-11) xl (men's 12-13) 2X (men's 14-15)	pr pr pr pr pr	1.95 1.95 1.95 1.95 1.95
2553-03	Canvas slip-on shoe, mens, navy, white, orange, black	4 - 17	pr	2.65
2545-01	Canvas slip-on shoe, womens, navy, white, orange, black	5 - 12	pr	2.65



Men's Sizes Available: 5-15 (full sizes); 6-1/2 to 11-1/2 (half sizes)

Women's Sizes Available: 6-15 (full sizes), regular width only

Men's Boots are available in R=Regular width at standard price

Men's Boots are available in W=Wide and EEE=Extra Wide widths for an additional charge.

*Note: Regular width men's 6-12 full-grain black boots are stock items. All others are made to order.

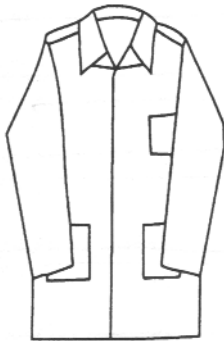
Freight not included on special order shoes.

<u>Item Number</u>	<u>Description</u>	<u>Size</u>	<u>Unit of Measure</u>	<u>List Price</u>
--------------------	--------------------	-------------	------------------------	-------------------

CULINARY ITEMS



2134-02	Hat, cook's, colors: white	universal	ea	\$1.10
2134-01	Cap, cook's envelope style color: white	sm - xlg	ea	0.90
2734-15	Apron, cook's, colors: white	30"x36"	ea	2.95
2301-06	Pants, cook's twill, button fly, color: white, available in even sizes only	26-42"	ea	8.25
		44-56"	ea	8.90
		58-68"	ea	9.50
2107-01	Shirt, cook's, button front, convertible collar, short sleeve color: white	sm - xlg	ea	5.60
		2xlg-3xlg	ea	5.85
		4xlg	ea	6.00
		5xlg	ea	6.15
		6xlg	ea	6.30
		7xlg	ea	6.45
2107-02	Shirt, cook's, button front, convertible collar, long sleeve color: white	8xlg	ea	6.60
		sm - xlg	ea	6.10
		2xlg-3xlg	ea	6.60
		4xlg	ea	6.75
		5xlg	ea	7.00
		6xlg	ea	7.15
2234-15	Coat, utility, twill , specify long or short sleeve, snap or button front, 30" length , colors: white	7xlg	ea	7.30
		8xlg	ea	7.50
		sm - xlg	ea	10.15
		2xlg-3xlg	ea	11.65
		4xlg	ea	12.20
		5xlg	ea	12.70
2234-16	Coat, utility, twill , specify long or short sleeve, snap or button front, 36" length , colors: white	sm - xlg	ea	10.40
		2xlg-3xlg	ea	11.95
		4xlg	ea	12.45
		5xlg	ea	12.95
2234-17	Coat, utility, twill , specify long or short sleeve, snap or button front, 42" length , colors: white	sm - xlg	ea	10.65
		2xlg-3xlg	ea	12.20
		4xlg	ea	12.70
		5xlg	ea	13.20
2234-18	Coat, utility, poplin , specify long or short sleeve, snap or button front, 30" length , colors: white	sm - xlg	ea	9.65
		2xlg-3xlg	ea	11.15
		4xlg	ea	11.65
		5xlg	ea	12.20
2234-19	Coat, utility, poplin , specify long or short sleeve, snap or button front, 36" length , colors: white	sm - xlg	ea	9.90
		2xlg-3xlg	ea	11.40
		4xlg	ea	11.95
		5xlg	ea	12.45
2234-20	Coat, utility, poplin , specify long or short sleeve, snap or button front, 42" length , colors: white	sm - xlg	ea	10.15
		2xlg-3xlg	ea	11.65
		4xlg	ea	12.20
		5xlg	ea	12.70



<u>Item Number</u>	<u>Description</u>	<u>Size</u>	<u>Unit of Measure</u>	<u>List Price</u>
--------------------	--------------------	-------------	------------------------	-------------------

CULINARY ITEMS (continued)

2765-04	Dish towel, herringbone, colors: white with colored border	16"x24"	ea	\$0.80
2765-03	Hand towel, huck, no colored border color: white	16"x36"	ea	1.10

HEALTHCARE ITEMS

2204-09	Scrub pants, poplin, combination elastic / draw string waist, with cargo pocket , colors: teal, burgundy, sky blue, spruce green, navy, available prints.	sm - xlg	ea	6.90
		2xlg-3xlg	ea	7.35
		4xlg-5xlg	ea	7.85
		6xlg-8xlg	ea	8.40



2204-10	Scrub pants, poplin, combination elastic / draw string waist, without cargo pocket , colors: teal, burgundy, sky blue, spruce green, navy, available prints.	sm - xlg	ea	6.30
		2xlg-3xlg	ea	6.70
		4xlg-5xlg	ea	7.20
		6xlg-8xlg	ea	7.70

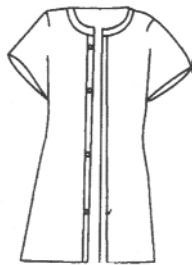
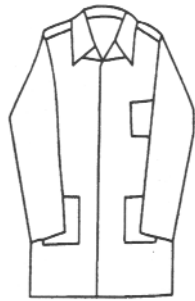
2204-07	Scrub pants, poplin, combination elastic / draw string waist, with cargo pocket , colors: khaki, light green, postman blue, or white	sm - xlg	ea	5.80
		2xlg-3xlg	ea	6.20
		4xlg-5xlg	ea	6.65
		6xlg-8xlg	ea	7.10

2204-08	Scrub pants, poplin, combination elastic / draw string waist, without cargo pocket , colors: khaki, light green, postman blue, or white	sm - xlg	ea	5.15
		2xlg-3xlg	ea	5.50
		4xlg-5xlg	ea	5.90
		6xlg-8xlg	ea	6.30

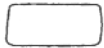



2210-09	Scrub shirt, poplin, breast pocket and two catch-all pockets, colors: teal, sky blue, spruce green, burgundy, navy, available prints.	sm - xlg	ea	5.95
		2xlg-3xlg	ea	6.35
		4xlg-5xlg	ea	6.80
		6xlg-8xlg	ea	7.30








2210-07	Scrub shirt, poplin, breast pocket and two catch-all pockets, colors: khaki, light green, postman blue, or white	sm - xlg	ea	5.30
		2xlg-3xlg	ea	5.70
		4xlg-5xlg	ea	6.10
		6xlg-8xlg	ea	6.50





<u>Item Number</u>	<u>Description</u>	<u>Size</u>	<u>Unit of Measure</u>	<u>List Price</u>
<u>HEALTHCARE ITEMS (continued)</u>				
2222-11	Scrub dress, poplin, two catch-all pockets. colors: teal, burgundy, sky blue, spruce green, available prints.	xs - xlg 2x-3x	ea ea	\$8.75 9.80
2234-18	Scrub coat, poplin, long or short sleeves, snap or button front, 30" length , colors: teal, burgundy, sky blue, spruce green, navy, available prints.	sm - xlg 2xlg-3xlg 4xlg 5xlg	ea ea ea ea	12.45 14.25 14.75 15.30
2234-19	Scrub coat, poplin, long or short sleeves, snap or button front, 36" length , colors: teal, burgundy, sky blue, spruce green, navy, available prints.	sm - xlg 2xlg-3xlg 4xlg 5xlg	ea ea ea ea	12.85 14.65 15.15 15.70
2234-20	Scrub coat, poplin, long or short sleeves, snap or button front, 42" length , colors: teal, burgundy, sky blue, spruce green, navy, available prints.	sm - xlg 2xlg-3xlg 4xlg 5xlg	ea ea ea ea	13.20 15.15 15.70 16.20
2234-15	Lab coat, twill , long or short sleeves, snap or button front, 30" length , colors: brown, gray, green, khaki, navy, postman blue or white	sm - xlg 2xlg-3xlg 4xlg 5xlg	ea ea ea ea	10.15 11.65 12.20 12.70
2234-16	Lab coat, twill , long or short sleeves, snap or button front, 36" length , colors: brown, gray, green, khaki, navy, postman blue or white	sm - xlg 2xlg-3xlg 4xlg 5xlg	ea ea ea ea	10.40 11.95 12.45 12.95
2234-17	Lab coat, twill , long or short sleeves, snap or button front, 42" length , colors: brown, gray, green, khaki, navy, postman blue or white	sm - xlg 2xlg-3xlg 4xlg 5xlg	ea ea ea ea	10.65 12.20 12.70 13.20
2234-18	Lab coat, poplin , long or short sleeves, snap or button front, 30" length , colors: light blue, light green, white, or khaki	sm - xlg 2xlg-3xlg 4xlg 5xlg	ea ea ea ea	9.65 11.15 11.65 12.20
2234-19	Lab coat, poplin , long or short sleeves, snap or button front, 36" length , colors: light blue, light green, white or khaki	sm - xlg 2xlg-3xlg 4xlg 5xlg	ea ea ea ea	9.65 11.40 11.95 12.45
2234-20	Lab coat, poplin , long or short sleeves, snap or button front, 42" length , colors: light blue, light green, white or khaki	sm - xlg 2xlg-3xlg 4xlg 5xlg	ea ea ea ea	10.15 11.65 12.20 12.70
2125-25	Gown, closed back 1-grip, short sleeve, colors: white	sm - xlg 2xlg	ea ea	5.85 6.70
2125-21	Gown, open back 5-grip, short sleeve, colors: white	sm -xlg 2xlg	ea ea	6.10 7.00




<u>Item Number</u>	<u>Description</u>	<u>Size</u>	<u>Unit of Measure</u>	<u>List Price</u>
<u>TOWELS</u>				
	2765-09 Bath towel, 5.5 lbs., colors: white	20"x40"	ea	\$1.50
	2765-18 Bath towel, medium weight, colors: white	24"x48"	ea	2.65
	2765-02 Washcloth, colors: white	12"x12"	ea	0.25
<u>SHOWER CURTAINS</u>				
	2465-13 Shower curtain, plastic, color: gray	36"x72"	ea	6.10
		36"x76"	ea	6.10
	Custom sizes also available	36"x78"	ea	6.10
		36"x80"	ea	6.10
<u>BAGS</u>				
	2465-05 Bag, laundry, nylon mesh, with ID patch, white	18"x24"	ea	3.20
		24"x36"	ea	4.20
		24"x48"	ea	4.65
	2465-17 Bag, laundry, nylon mesh, duck bottom	24"x36"	ea	4.95
	2465-06 Bag, laundry, duck, unbleached	36"x48"	ea	5.60
	2465-07 Bag, laundry, round bottom, duck, unbleached	36"x48"	ea	6.10
	2469-06 Bag, property, vinyl	18"x24"	ea	3.00
<u>MISCELLANEOUS</u>				
	2093-01 Buttons, 23 ligne	13 gross	box	22.75
	2094-03-02 Thread, postman blue	12,000 yds	cone	10.05
	2094-03-01 Thread, white	12,000 yds	cone	8.10
	2469-09 Eyeglass Covers - Colors: Black or Burgundy		ea	0.25
	2094110104 Nylon Mattress Thread		cone	23.50
	2094120100 Tufting Twine		lb	21.50

<u>Item Number</u>	<u>Description</u>	<u>Size</u>	<u>Unit of Measure</u>	<u>List Price</u>
<u>MATTRESSES</u>				
	2471-04 Mattress, cotton core, 6oz. ACA outer cover	25"x72"x4"	ea	\$37.85
		30"x72"x4"	ea	37.85
		30"x76"x4"	ea	38.55
		34"x76"x4"	ea	38.80
		36"x76"x4"	ea	43.20
	2471-24 Mattress, cotton core, 7oz. vinyl outer cover	25"x72"x4"	ea	46.60
		30"x72"x4"	ea	47.05
		30"x76"x4"	ea	47.55
		34"x76"x4"	ea	48.05
		36"x76"x4"	ea	56.75
	2471-14 Mattress, cotton core, 14oz. vinyl outer cover	25"x72"x4"	ea	50.45
		30"x72"x4"	ea	50.85
		30"x76"x4"	ea	51.45
		34"x76"x4"	ea	51.90
		36"x76"x4"	ea	63.55
	2474-44 Mattress, densified polyester, 12oz. vinyl outer cover	25"x72"x4"	ea	34.98
		30"x76"x4"	ea	40.48
		34"x76"x4"	ea	44.22
		36"x76"x4"	ea	46.20
			2474-45 Mattress, densified polyester, 12oz. vinyl outer cover	30"x75"x5"
30"x76"x5"	ea			43.95
31"x78"x5"	ea			45.54
31"x81"x5"	ea			46.37
33"x75"x5"	ea			46.59
33"x78"x5"	ea			47.47
35"x74"x5"	ea			48.07
35"x76"x5"	ea			49.06
35"x80"x5"	ea			51.10
36"x76"x5"	ea			50.16
36"x80"x5"	ea			51.26
37"x75"x5"	ea			51.76
35"x84"x5"	ea	53.02		
	2474-47 Mattress, densified polyester, 12oz. vinyl outer cover	36"x76"x7"	ea	64.57
		36"x80"x7"	ea	66.44
	2474-14 Mattress, densified polyester, 14oz. vinyl outer cover	30"x72"x4"	ea	40.43
		30"x75"x4"	ea	41.20
		36"x75"x4"	ea	46.92
		36"x80"x4"	ea	49.39

**PRIDE's Densified Polyester and Synthetic Foam Mattresses are approved for state purchase (except for DC Institutions).
Contract # 850-500-95-P**



For volume pricing on Polyester Mattresses, please contact our Customer Service Representatives.

Freight not included on Price of Mattresses, Mattress covers, and pillows

<u>Item Number</u>	<u>Description</u>	<u>Size</u>	<u>Unit of Measure</u>	<u>List Price</u>
<u>MATTRESSES (continued)</u>				
	2474-15	Mattress, densified polyester, 14oz. vinyl outer cover	36"x76"x5" ea	\$50.99
			37"x75"x5" ea	51.76
			38"x75"x5" ea	52.86
	2474-16	Mattress, densified polyester, 14oz. vinyl outer cover	37"x75"x6" ea	60.28
			36"x80"x6" ea	57.09
	2473-14	Mattress, polyurethane, vinyl, XL	specify sizes ea	Quote
	2475-15	Mattress, synthetic foam, vinyl, XL	specify sizes ea	Quote
<u>MATTRESSES COVERS</u>				
	2462-74	Mattress cover, 6oz. cotton*	30"x76"x4" ea	20.90
	2462-94	Mattress cover, 7oz. vinyl*	25"x72"x4" ea	11.90
			30"x72"x4" ea	11.90
			30"x76"x4" ea	12.15
2462-84	Mattress cover, 14oz. vinyl**	25"x72"x4" ea	15.60	
		30"x72"x4" ea	15.60	
		30"x76"x4" ea	16.25	

* Specify **with** or **without grommets**

** Custom Sizes Available





<u>PILLOWS</u>				
	2463-05	Pillow, cotton core, 6oz. ACA outer cover	20"x26" ea	5.80
	2463-03	Pillow, cotton core, 7oz. vinyl outer cover	17"x25" ea	5.40
			20"x26" ea	7.75
			18"x22" ea	4.70
	2463-01	Pillow, cotton core, 14oz. vinyl outer cover	20"x26" ea	8.70
	2463-14	Pillow, densified polyester fiber, 7oz. vinyl outer cover	20"x25" ea	7.88
			21"x27" ea	8.36
	2463-16	Pillow, densified polyester, 12oz cover	18"x24" ea	7.42
			20"x26" ea	8.46
	2463-12	Pillow, densified polyester, microvent cover	20"x26" ea	8.63

PILLOWS COVERS

* 2462-25	Pillow cover, 6oz. ACA	20"x26" ea	4.40
* 2462-31	Pillow cover, 7oz. vinyl	20"x26" ea	3.85
* 2462-28	Pillow cover, 14oz. vinyl	20"x26" ea	4.65

* Specify **with** or **without grommets**

Freight not included on Price of Mattresses, Mattress covers, and pillows

<u>Item Number</u>	<u>Description</u>	<u>Size</u>	<u>Unit of Measure</u>	<u>List Price</u>
<u>PILLOWCASES</u>				
 2762-05	Pillowcase, colors: white	21½"x31"	ea	\$1.25
2762-05	Pillowcase, colors: blue	21½"x34"	ea	1.75
<u>BLANKETS</u>				
 2762-08	Blanket, cotton, thermal, 2.5#, white	66"x90"	ea	6.87
	<u>Quantity Per Shipment</u>	<u>Price (ea)</u>	<u>Freight</u>	
	1 - 119	\$ 6.87	Pre-Pay and Add	
	120 - 479	\$ 6.87	Included	
	480 - 999	\$ 6.72	Included	
	1000+	\$ 6.67	Included	
2762-09	Blanket, cotton, thermal, color: blue	66"x88"	ea	12.20
2162-08	Blanket, woven, 70% wool / 30% synthetic, colors: gray	62"x82"	ea	12.20
<u>SHEETS</u>				
 2462-99	Mattress cover, fitted, unbleached sheeting	specify sizes	ea	5.35
2462-07	Mattress cover, draw string, unbleached sheeting	specify sizes	ea	7.35
2762-02	Fitted sheet, color: white	36"x75"x4" 36"x78"x8" 36"x80"x6" 36"x80"x8"	ea ea ea ea	6.10 7.60 7.60 7.85
2762-02	Fitted sheet, colors: blue	36"x80"x8"	ea	8.90
 2762-01	Flat sheet, colors: white	54"x94" 66"x99" 72"x108"	ea ea ea	2.55 3.95 5.65
2762-01	Flat sheet, colors: blue	66"x99"	ea	5.95
<u>ISOLATION PRODUCTS</u>				
2471-34	Isolation mattress, triple stitched glued seams, 18oz. vinyl cover	specify sizes	ea	87.30
2463-08	Isolation pillow, triple stitched glued seams, 18oz. vinyl	20"x26"	ea	12.45
2469-05	Isolation blanket, 100% cotton duck face, 70% wool/ 30% synthetic woven core, treated with Insta-Shield fire preventer	64"x72"	ea	55.83
2469-08	Isolation shroud, 100% cotton duck, velcro closure treated with Insta-Shield fire preventer	26"x50" other sizes available	ea	12.20
2469-17	Isolation gown		ea	17.65
2469-18	Isolation smock with velcro straps		ea	98.95

NOTES:

Excerpts from Florida Statutes governing the purchase of products from PRIDE

946.515 Use of goods and services produced in correctional work programs.

- (1) Any service or item manufactured, processed, grown or produced by the corporation in a correctional work program may be furnished or sold to any legislative, executive or judicial agency of the state, any political subdivision, any other state, any foreign entity or agent thereof, or any agency of the Federal Government, or to any contract vendor for such agencies or any subcontractor of the contract vendor, or to any person, firm, or business entity not prohibited by federal law.
- (2) No similar product or service of comparable price and quality found necessary for use by any state agency may be purchased from any source other than the corporation if the corporation certifies that the product is manufactured by, or the service is provided by, inmates, and the product or service meets the comparable performance specifications and comparable price and quality requirements as specified under s. 287.042 (1) (f) or as determined by an individual agency as provided in this section. The purchasing authority of any such state agency may make reasonable determinations of need, price, and quality with reference to products or services available from the corporation. In the event of a dispute between the corporation and any purchasing authority based upon price or quality under this section or s. 287.042 (1) (f), either party may request a hearing with the Division of Purchasing and if not resolved, either party may request a proceeding pursuant to s. 120.57, which shall be referred to the Division of Administrative Hearings within 60 days after such request, to resolve any dispute under this section. No party is entitled to any appeal pursuant to s. 120.68.
- (4) The provisions of Part 1 of Chapter 287 do not apply to any purchase of commodities or contractual services made by any state agency from the corporation.
- (6) If, pursuant to a contract between any legislative, executive, or judicial agency of the state and any private contract vendor, a product or service is required by the Department of Management Services or on behalf of any state agency, is certified by or is available from the corporation identified in this chapter, and has been approved in accordance with subsection (2), the contract must contain the following language:

“It is expressly understood and agreed that any articles which are the subject of, or required to carry out this contract, shall be purchased from the corporation identified under Chapter 946, F.S., in the same manner and under the same procedures set forth in Sections 946.515 (2), and (4), F.S.; and for purposes of this contract the person, firm, or other business entity carrying out the provisions of this contract shall be deemed to be substituted for this agency insofar as dealings with such corporations are concerned.”

- (7) The provisions of ss. 946.21 and 946.518 do not apply to this section.

287.042 Powers, duties, and functions. – The division shall have the following powers, duties and functions:

- (1)(f) The corporation may submit products and services to the division of testing, analysis, and review relating to the quality and cost comparability. If, after review and testing, the division approves of the products and services, the division shall give written notice thereof to the corporation. The corporation shall pay a reasonable fee charged for testing its products by the Department of Agriculture and Consumer Services.
- (2)(a) ...Purchases by any county, municipality, private nonprofit community transportation coordinator designated pursuant to chapter 427, while conducting business related solely to the Transportation Disadvantaged Commission, or other local public agency under the provision in the state purchasing contracts, and purchases, from the corporation operating the correctional work programs, of products or services that are subject to paragraph (1)(f), are exempt from the competitive sealed bid requirements otherwise applying to their purchases.



www.PRIDE-enterprises.org
E-mail:info@PRIDE-enterprises.org

Please mail ALL Purchase Orders for Sewn Products to:

Pride Enterprises
Sewn Products Customer Service
P.O. Box 215
Lowell, FL 32663
352-732-1303 Ext 224, 230, 237
FAX 352-732-1309

marionorders@pride-enterprises.org
Sending elsewhere may delay your order.

PRIDE CUSTOMER SERVICE CENTERS:

<u>INDUSTRY</u>	<u>PHONE#</u>
BOXES , Marion	(352) 620-3751
DENTAL , Union	(386) 431-2323
FURNITURE , Polk	1-877-34-PRIDE
Furniture Refurbishing, Polk	1-877-34-PRIDE
Detention Furniture / Metal Products, Union	(386) 431-2456
Modular Office Systems, Polk	1-877-34-PRIDE
Desks, Case Goods	1-877-34-PRIDE
OPTICAL , Broward	(954) 252-6360
SANITARY MAINTENANCE , Avon Park	(863) 452-3872
TAG , Union	(386) 431-2000 x2326
PAINT , Baker	(386) 758-0666/67
PRINT , Calhoun	(850) 674-3299
Sumter	(352) 793-1444
CADD/DIS , Liberty	(850) 643-3644
IDENTIFICATION / VINYL PRODUCTS , Cross City	(800) 443-7601
SEWN PRODUCTS , Marion	(352) 732-1303
TIRES , Avon Park	(863) 452-3888
VEHICLE Refurb , Tomoka	(386) 254-3916